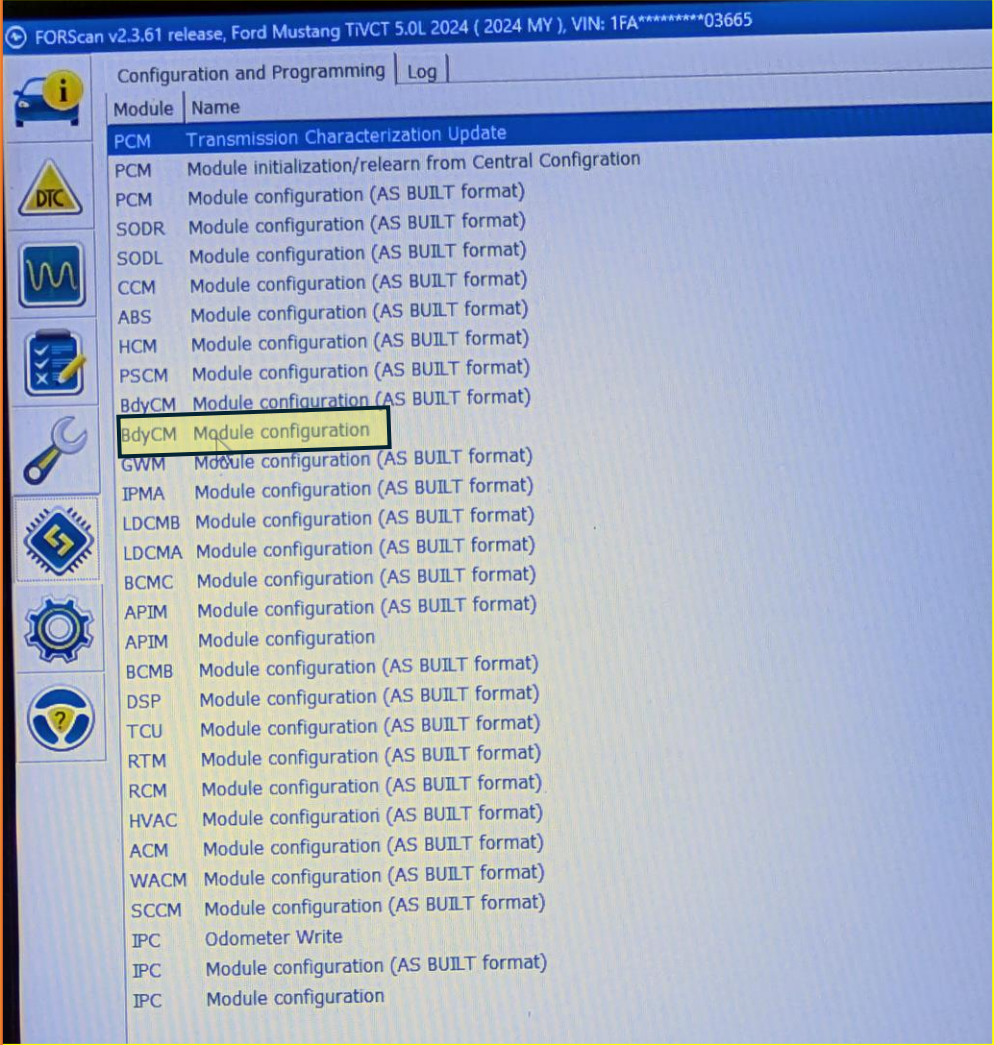


Recognized

- Forscan ver 2.3.61
- Didn't have to enter strategy code
 - With all previous versions, I tried using the strat code buried in my As Built data file (procured here: <https://www.motorcraftservice.com/AsBuilt>) but couldn't get in—ended using a F150 PCM # just so I could look around

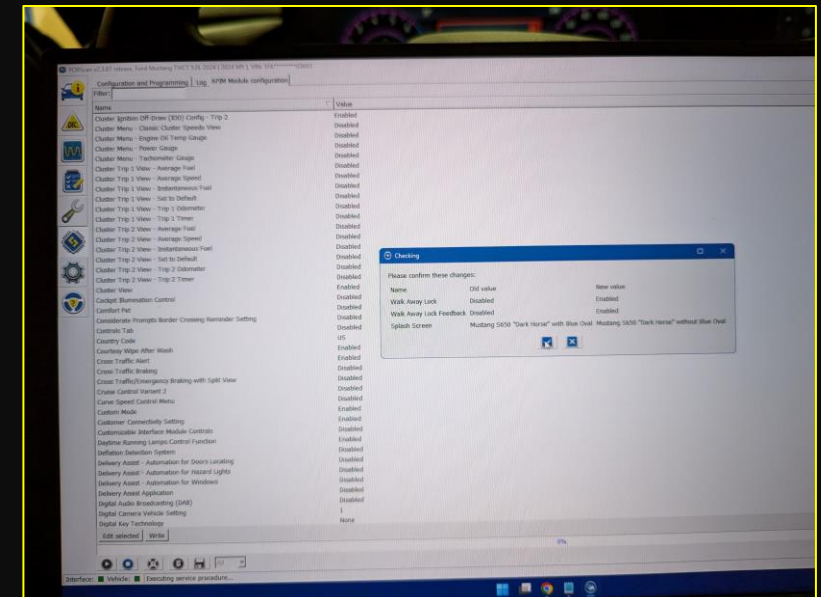
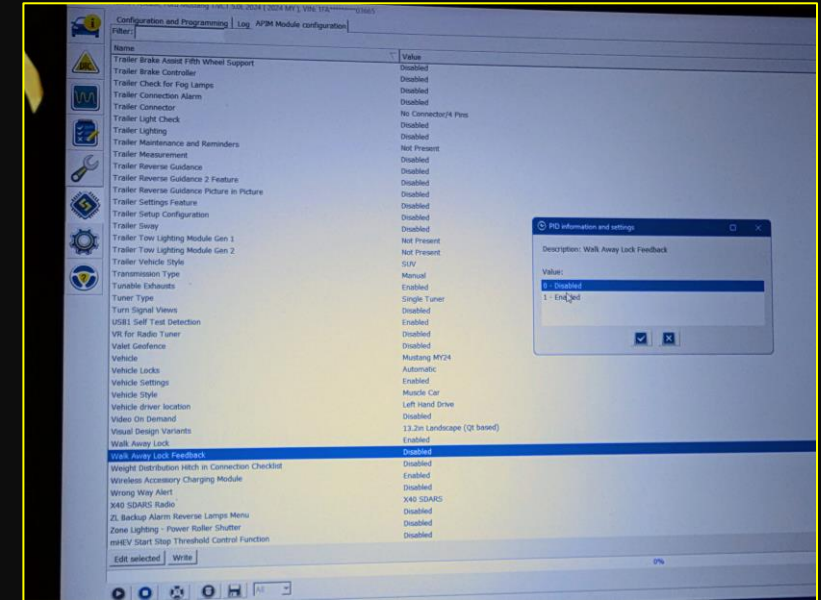


Modules

- Peeked in the “BdyCM” Module vice AsB Data

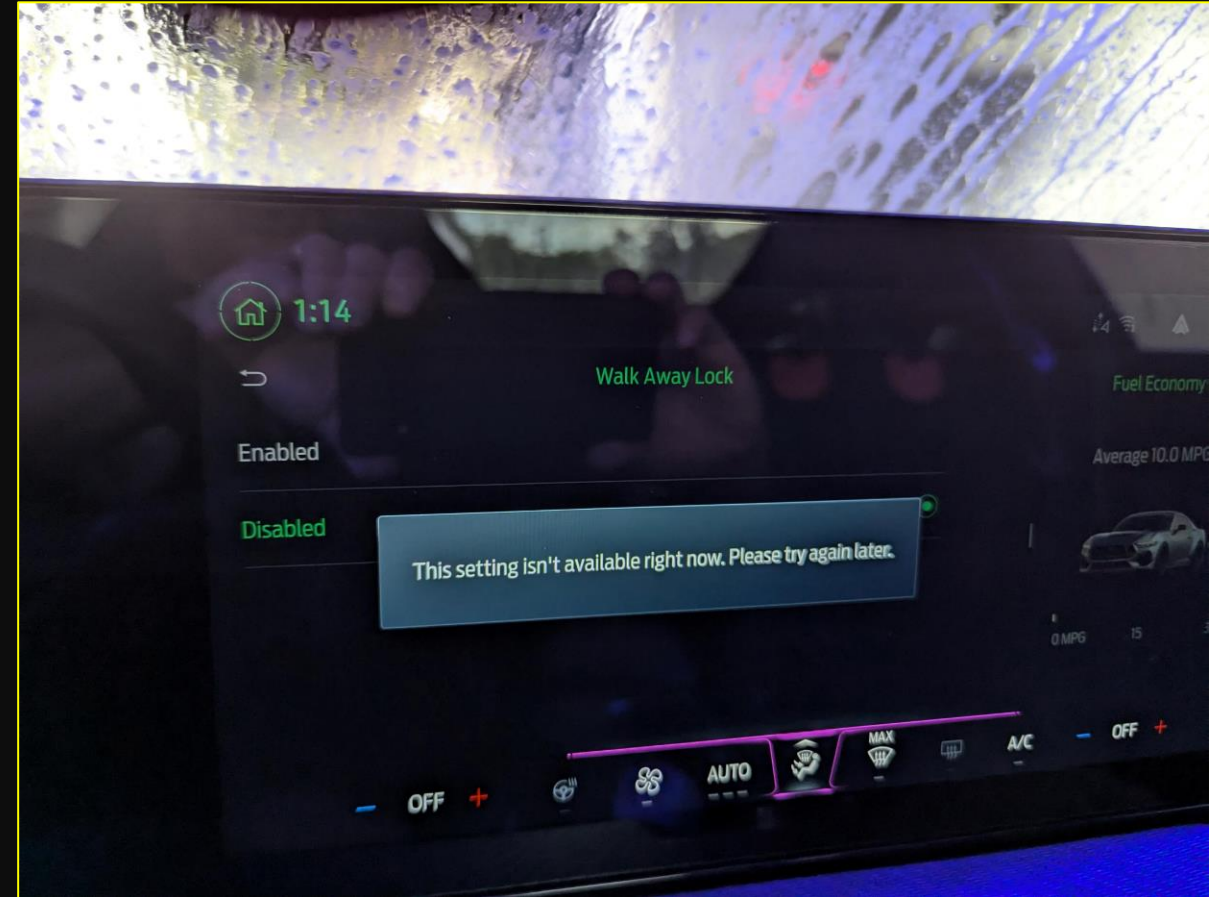
Walk Away Lock & Feedback

- Disabled by default
- I enabled both
- But...next slide...



WAL

- Disabled (according to the display)
 - Good news (!!!)...I get to “try again later.” Or...
 - I’ll go into AsB Data to change the all the values for the instances of addresses 726-91-01 and 726-97-02 (there’s a few)
-



In addition...

Police Dark Car – DRL ?

- Had to google “PDC” mode
- Enabled by default in BdyCM
- Disabled in APIM

Passive Entry Feature - Personal 1	Value
Passive Entry Feature - Personal 2	Enabled
Passive Entry Feature - Personal 3	Enabled
Passive Entry Feature - Personal 4	Enabled
Passive Entry Feature - Vehicle	Enabled
Perimeter Alarm	Enabled
Perimeter Alarm Chime	Enable Driver
Police Column Shifter Key Out Inhibit	Disabled
Police Dark Car - DRL	Enabled
Police Dark Car mode	Disabled
Police Idle Factory	Disabled
Police Rear Door	Disabled
Power Liftgate Control	Disabled
Power Lock	Enabled
Power Lock On Door Ajar	Disabled
Power Point Feature	Enabled
Power Point Timeout, s	4500
Puddle Lamp Circuit Usage	Not Used
Puddle lamp	Disabled
Rain Light Sensor	Disabled

FORScan v2.3.61 release, Ford Mustang TIVCT 5.0L 2024 (2024 MY), VIN: 1FA*****03665	
Configuration and Programming Log APIM Module configuration	
Filter:	
Name	Value
Phone As A Key	Disabled
PIP Views	Disabled
PIP Views at Speed	Disabled
Plugin Hybrid Electric Vehicle	Disabled
Police Dark Car mode	Disabled
Police Enhanced Feature Speed	Disabled
Police Max Speed	Disabled
Power Liftgate Control Function	Disabled
Power Lumbar	Disabled
Power Running Boards Auto Timer	Disabled
Power Running Boards Kickswitch	Disabled
Power Running Boards Max Permissible Speed, Km/h	0
Power Tailgate	Disabled
Power Tailgate Type	Liftgate
Power to the Box	Disabled
Powerfold Mirrors	Disabled
Predictive Lights	Disabled
Predictive Speed Assist	Disabled
Pro Eco Idle/Idle Management with Cabin Comfort	Disabled
Pro Power Onboard Feature	Not Configured

DTCs

- ABS DTC U0401

===ABS DTC U0401:86-68===

Code: U0401 - Invalid Data Received From ECM/PCM 'A'

Additional Fault Symptom (:86):

- Signal Invalid

Status (-68):

- Previously Set DTC - Not Present at Time of Request

- Malfunction Indicator Lamp is Off for this DTC

- Test not complete

Module: Antilock braking system

Freeze Frame #1:

-EVENT_TIME: 351520 s (Mon Jan 08 07:37:03 2024) - Event time

-TOTAL_DISTANCE: 38 km - Total Distance

-MODULE_VOLTAGE: 14.8 V - Control Module Voltage

-OUTDOOR_TEMPERATURE: 5 °C - Outside temperature

-POWER_MODE: Running - Power Mode Status

-VEHICLE_SPEED: 81 km/h - Vehicle Speed

-ABS: Inactive - ABS

-AYC: Inactive - AYC

-BTCS: Inactive - BTCS -201D

-HDC: Inactive - HDC

-RSC: Inactive - RSC

-BTC: Inactive - BTC

===END ABS DTC U0401:86-68===

DTC

- ABS DTC U0554

===ABS DTC U0554:29-6D===

Code: U0554 - Invalid Data Received From Accessory Protocol Interface
Module 'A'

Additional Fault Symptom (:29):

- Signal Invalid

Status (-6D):

- DTC Present at Time of Request
- Malfunction Indicator Lamp is Off for this DTC
- Test not complete

Module: Antilock braking system

Freeze Frame #1:

-EVENT_TIME: 14091166 s (Sat Jun 15 09:11:09 2024) - Event time

-TOTAL_DISTANCE: 6042 km - Total Distance

-MODULE_VOLTAGE: 14.5 V - Control Module Voltage

-OUTDOOR_TEMPERATURE: 22 °C - Outside temperature

-POWER_MODE: Running - Power Mode Status

-ABS: Inactive - ABS

-AYC: Inactive - AYC

-BTCS: Inactive - BTCS -201D

-HDC: Inactive - HDC

-RSC: Inactive - RSC

-BTC: Inactive - BTC

===END ABS DTC U0554:29-6D===